

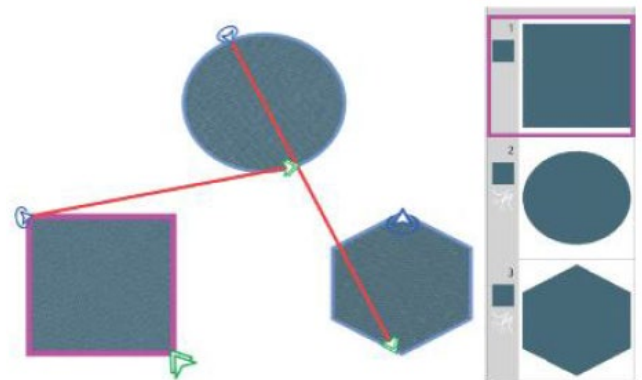
Sketch

This technique changes a bitmap image into an artistic charcoal sketch. Designed to work on white fabric using black and grey threads with the stitch-out covering 20% of a regular embroidery design. Sketch designs can also be embroidered on delicate and stretch fabrics and the embroidered fabric will remain flexible.



Re-arrange Tool

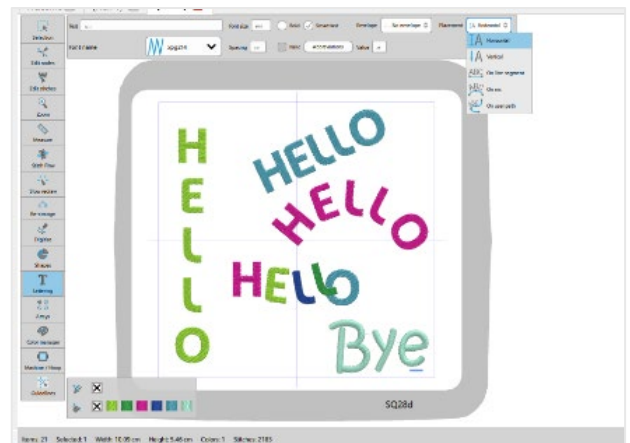
This tool allows users the effortlessly modify design sequences, trim points and Start/Exit points all at one. This Tool is activated when 'Auto' sequence is changed to 'Manual'; select an object and click on it, you will see the connections between the objects with a red line, plus see the green entry and blue exit points. You can add a thread trim function as required or change a trim to a no-thread trim. You have the control.



Lettering [included in Junior]

Automatically generated vertical placement, along with existing Horizontal, On line segment, On arc and On user path. Lettering just got better, you can create a number of various letter layouts with the variety of tools available, unleash your lettering skills. Think outside the box.

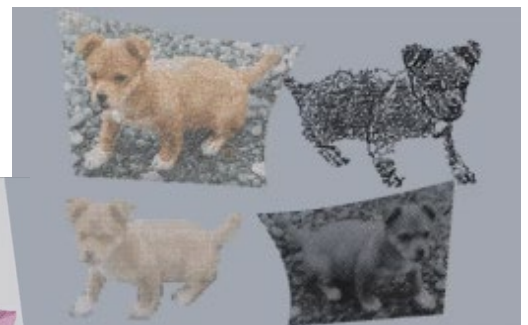
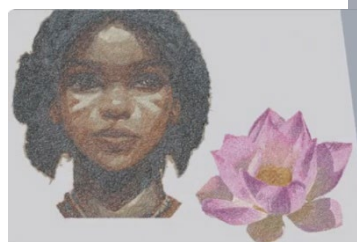
Using letters to create an embroidery design.
Look and find the letter 'e' plus '&' symbol.



Ability to Clip / Rotate / Cut images

Bitmap images can be clipped into a different shape and stitches generated within the new shape with Cross-stitch, Photostitch, PaintStitch and Sketch. The bitmap shape can be rotated or slanted and can also have holes.

NOTE: In both AD versions (*full & Junior*) PNG files with transparency are supported. Stitches will only be generated on the transparent area of the PNG, not on the non-transparent area.

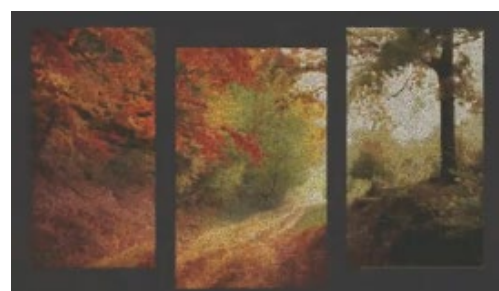


Artistic Digitizer – What's NEW in version 2.0

Cutting with Knife Tool

Use the knife tool to split any bitmap image with fill-type Cross-stitch, Photo-stitch, PaintStitch or Sketch.

The filled image can be cut multiple times to create a unique design or shape. The cut pieces can also be moved around to enhance your design.

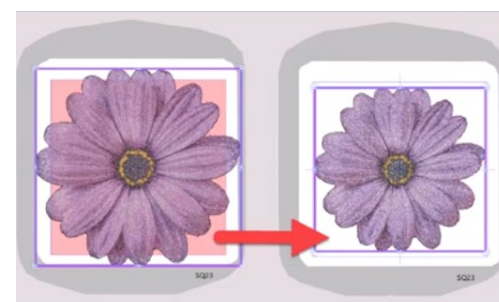


Resize to Hoop [included in Junior version]

Ability to fit an imported image into the required hoop.

The software will automatically resize an image (increase/decrease) using the 'Fit to Hoop' Tool. The same tool can be used for an embroidery design. This feature is similar to the one used within the CM17 Embroidery-Link APP.

NOTE: Not all embroidery designs have the ability to increase/decrease, recommend resized design is tested and edited accordingly if needed.

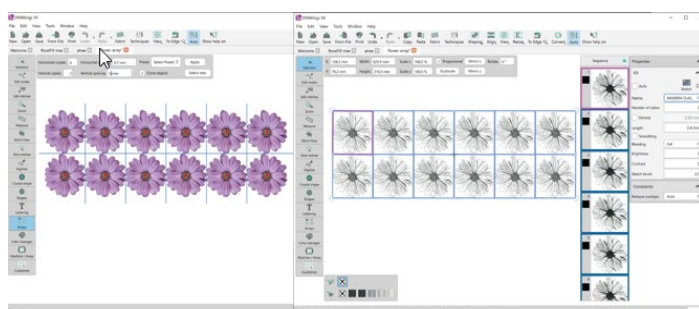
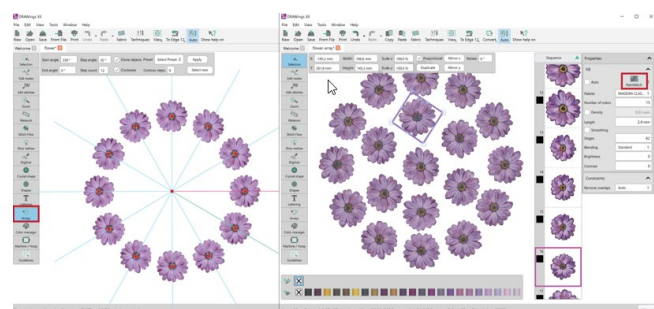
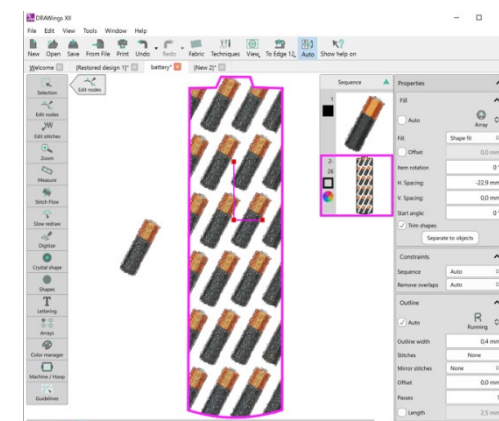


Array Fill with a bitmap image

Use a bitmap image with the new Array tool to fill an area. The image can be changed into stitches using Cross-stitch, Photostitch, PaintStitch or Sketch. Select the Array option and choose a bitmap image as a base object to fill, editing is available in the Properties window to re-arrange the fill.

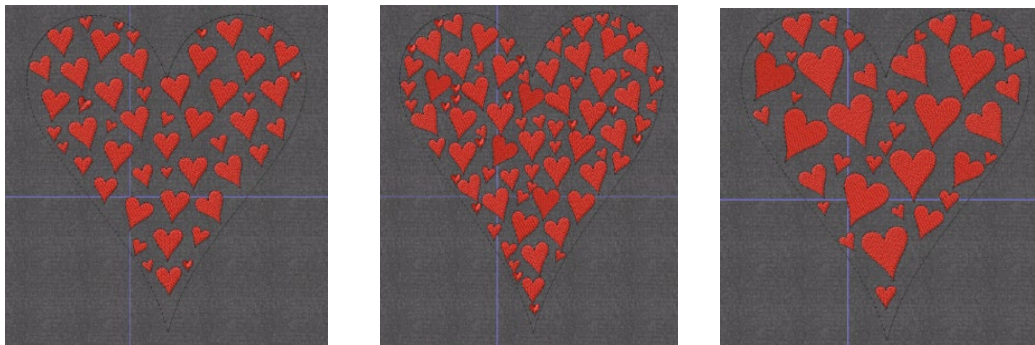
Rectangular or Circular Arrays using bitmap images

Using a bitmap image converted to Cross-stitch, Photostitch, PaintStitch or Sketch, the array layouts allow for unique patterns with symmetry. Adjust the design size and the placement as required.



New fill type in Array – Space Fill

This new irregular fill type fills the outer shape area using copies of the internal shape which is scaled and rotated. The below images use a heart shaped fill with varying fill parameters. Editing allows for a minimum and maximum size and the density of the fill.



New Floral Fill

Based on the above Space fill, the new floral fill type generates more flowers and larger ones with less stems. You can control the size of one flower and the placement, the rest is automatic. The existing floral tool is still included.

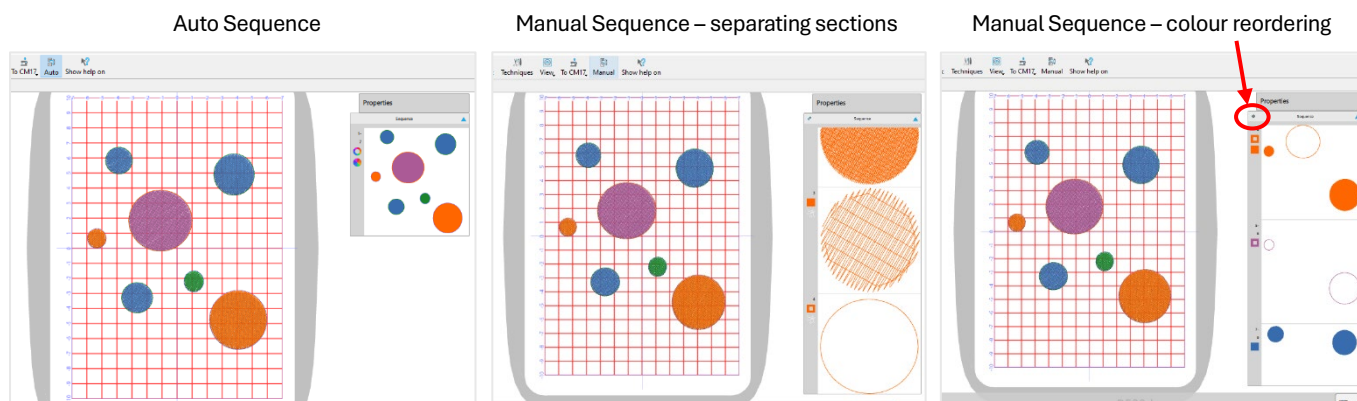


Manual Mode additional functions [included in Junior version]

On the top toolbar when you change the Auto Sequence to Manual Sequence the following:

- Separate fills from outlines
- Re-order objects for fewer colour changes
- Add trim function to objects as required

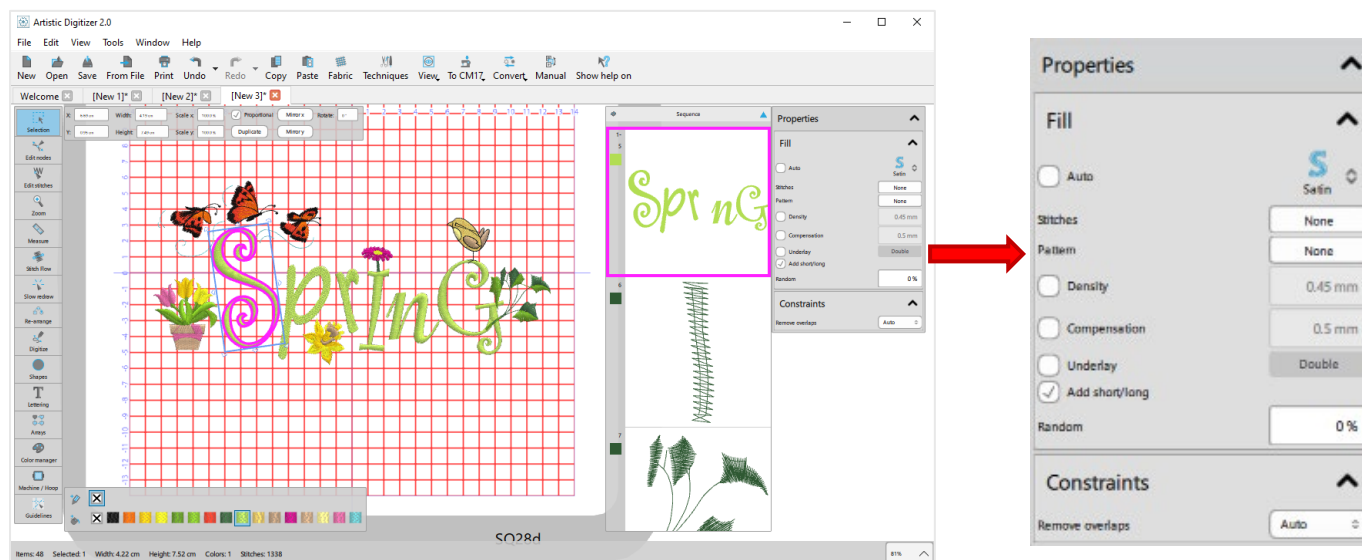
Certain design types will not be broken apart in manual mode: Applique, Array, Floral & Bitmap fills.



Artistic Digitizer – What's NEW in version 2.0

Re-Designed Object Properties [included in Junior version]

The Properties window will open appear when a design object is selected. Only the selected object properties will open in the Properties window, if the object is only a fill stitch, then just the Fill properties will appear, if the object also has an outline, then both Fill and Outline Properties will open.



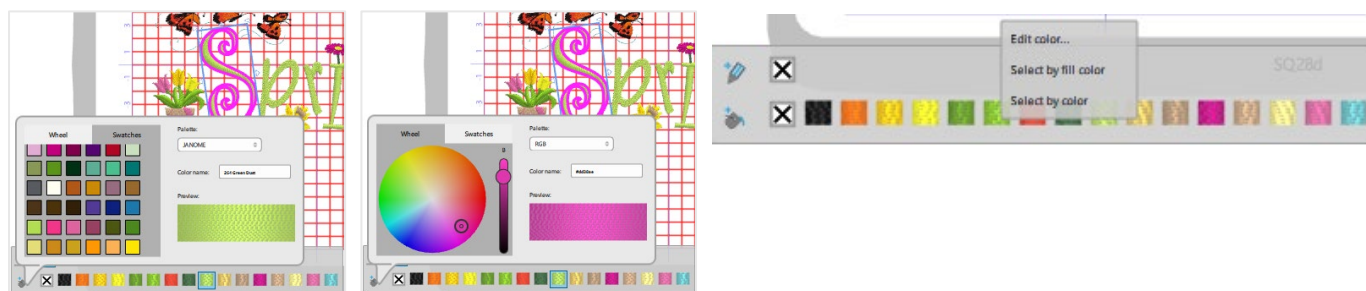
Colours Dock Updated [included in Junior version]

Thread colour selections are no longer a Tab alongside the Properties Window. The colour menu is now located on the bottom left of the screen with the design colours, it includes variety of Thread Brands, Colour Swatches for selected thread brand, Colour Wheel to select a different colour plus you can match an RGB colour to the thread colour. Still included is the individual colour options menu; select a colour within design right mouse click on the individual colour, from the opening menu can: Edit Colour, Select by fill colour, Select by colour.

Colour Swatches

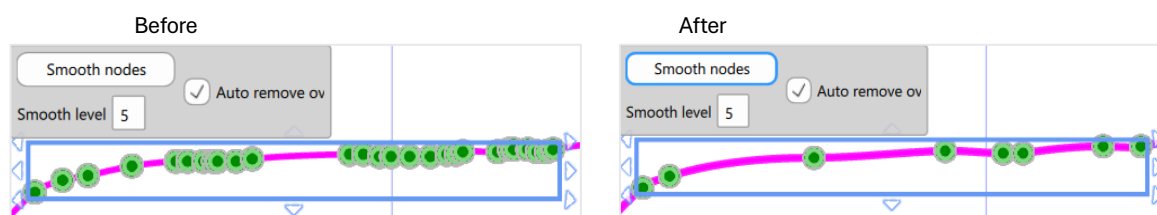
Colour Wheel

Individual colour menu options



Smooth Nodes

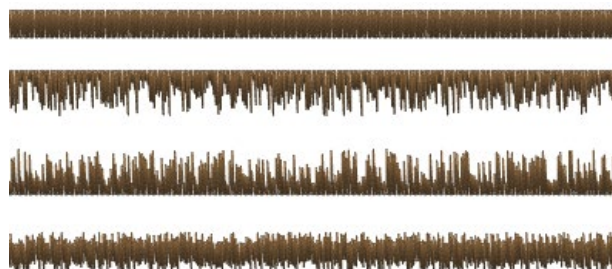
When using trace to auto-digitize an image, the software has the ability to automatically remove un-needed nodes to enhance the quality of the design.



Artistic Digitizer – What's NEW in version 2.0

Textured Fill

In Properties a satin stitch can now have additional editing, add random stitches to either side or both. The random stitch percentage can be edited to achieve the required look. This feature can be used when digitizing for example, animals or birds to achieve the outer layers of fur/feathers.



Ability to edit Raw stitch designs [included in Junior version]

'Raw' means an embroidery design not digitized in Artistic Digitizer software.

Stitch Density: You can now adjust the density of a raw stitch object without changing its size. The density adjustment range is – 25% to + 25%.

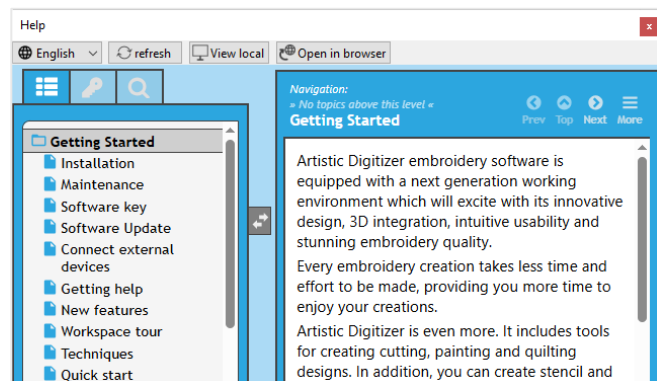
Automatic Fix/Lock Stitches: Lock or fixing stitches will automatically be added where necessary within a raw embroidery design. This feature is also included in the Janome Embroidery-Link APP for the CM17.

NEW Help System [included in Junior version]

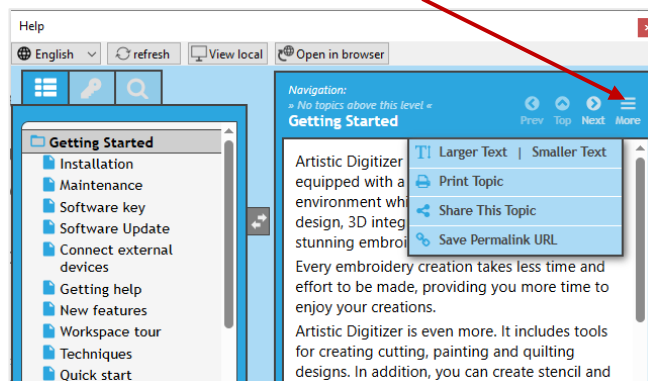
The new help system is based on HTML which offers the following advantages:

1. Content can be updated without the need to issue a software update.
2. User can see the Help Menu in different languages without having to download and convert; simply select a language on the first tab, default is English.
3. Able to download the help file to a local view plus able to switch back to the on-line help.

To access, click on word "Help" at the top of the screen
Then, click on 'Help Topics.', the below window opens.



Need the text larger or smaller, click on More and select from menu.



Tutorial Videos [included in Junior version]

A series of additional tutorial videos have been made on Version 2.0 features and added to the opening page of the software. These videos are also available on Janome Corporations YouTube channel.

Access to AD Version 2.0 videos

- Full AD version 2.0 – 61 Videos [CLICK HERE](#)
- Junior version 2.0 – 38 Videos [CLICK HERE](#)

There are also, many other small improvements to enhance the usability of the Artistic Digitizer software. (Full version & Junior version)